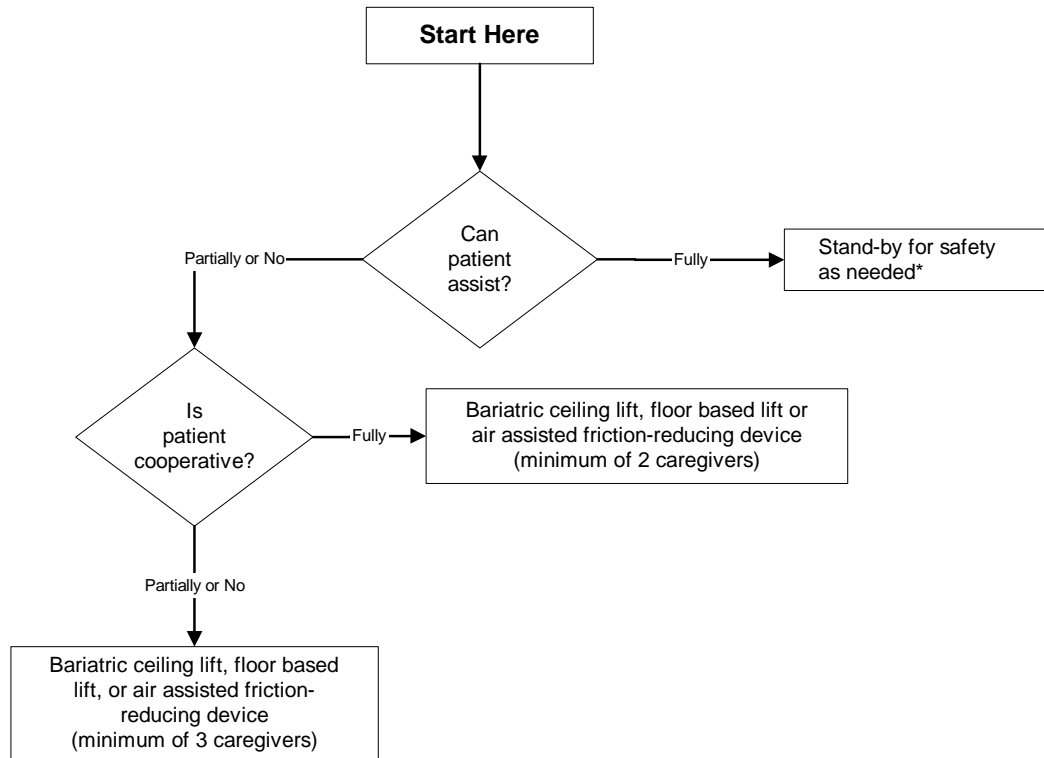


Bariatric Algorithm 4: Bariatric Reposition in Chair: Wheelchair, Chair, or Dependency Chair
rev. 4/1/05



- Take full advantage of chair functions, e.g., chair that reclines, or use an arm rest of chair to facilitate repositioning.
- Make sure the chair wheels are locked.
- Consider leaving the sling under the patient at all times to minimize risk to staff during transfers after carefully considering skin risk to patient and the risk of removing/replacing the sling for subsequent moves.

* "Stand-by for safety." In most cases, if a bariatric patient is about to fall, there is very little that the caregiver can do to prevent the fall. The caregiver should be prepared to move any items out of the way that could cause injury, try to protect the patient's head from striking any objects or the floor and seek assistance as needed once the person has fallen.

- If patient has partial weight-bearing capability, transfer toward stronger side.
- Consider using an abdominal binder if the patient's abdomen impairs a patient handling task.
- Assure equipment used meets weight requirements. Standard equipment is generally limited to 250-350 lbs. Facilities should apply a sticker to all bariatric equipment with "EC" (for expanded capability) and a space for the manufacturer's rated weight capability for that particular equipment model.
- Identify a leader when performing tasks with multiple caregivers. This will assure that the task is synchronized for increased safety of the healthcare provider and the patient.
- During any patient transferring task, if any caregiver is required to lift more than 35 lbs of a patient's weight, then the patient should be considered to be fully dependent and assistive devices should be used for the transfer.

