

# AGE RELATED HEARING LOSS

## Appendix A (Nonmandatory) to 437-001-0700, Age Related Hearing Loss.

You cannot use age correction for determining whether an employee has reached the 25 dB threshold above audiometric zero. You cannot age-correct an audiogram for determining a Standard Threshold Shift (STS) for purposes of OAR 437-002-1910.95, "Occupational Noise Exposure."

When determining whether you must record an STS on the OSHA 300 Log, you can allow for the contribution of aging by adjusting the current audiogram. If you choose to adjust the audiogram, follow the procedure described below. This procedure and the age correction tables were developed by the National Institute for Occupational Safety and Health in the criteria document entitled "Criteria for a Recommended Standard . . . Occupational Exposure to Noise," ((HSM)-11001).

For each ear;

(i) Determine from Tables F-1 (for males) or F-2 (for females) the age correction values for the employee by:

(A) Finding the age at which the current audiogram was taken and recording the corresponding values of age corrections at 2000 Hz, 3000 Hz, and 4000 Hz;

(B) Finding the age at which the baseline audiogram was taken and recording the corresponding values of age corrections at 2000 Hz, 3000 Hz, and 4000 Hz.

(ii) Subtract the values in the baseline from the values in the current audiogram.

(iii) The calculated difference represents the portion of the change in hearing that may be due to aging.

(iv) An STS is a loss of 10 dB as an average of the 2000 Hz, 3000 Hz, and 4000 Hz between the baseline audiogram and the current audiogram. Once you have performed the age correction, add up the results of the age-corrected audiogram and divide by three. If the result is 10 or larger, then it is still an STS.

**EXAMPLE:** Employee is a 32-year-old male. The audiometric history for his right ear is shown in decibels below.

Employee's age	Audiometric test frequency (Hz)		
	2000	3000	4000
*27	0	0	5
28	0	0	10
29	0	5	15
30	5	10	20
31	10	20	15
*32	10	10	25

# AGE RELATED HEARING LOSS

The audiogram at age 27 is considered the baseline since it was the initial audiogram. Asterisks have been used to identify the baseline and current audiogram. A threshold shift of 10 dB exists at both the 2000 Hz and 3000 Hz, and a 20 dB shift exists at 4000 Hz between the audiograms taken at ages 27 and 32.

(The threshold shift is computed by subtracting the hearing threshold at age 27, which was 0, 0, 5, from the hearing threshold at age 32, which is 10, 10, and 25). A retest audiogram has confirmed this shift. The contribution of aging to this change in hearing may be estimated in the following manner:

Go to Table F-1 and find the age correction values at age 27 and age 32.

	Frequency (Hz)		
	2000	3000	4000
Age 32	5	7	10
Age 27	4	6	7
Difference	1	1	3

The difference represents the amount of hearing loss that may be attributed to aging in the time period between the baseline audiogram and the current audiogram.

In this example, the difference at 2000 Hz is 1 dB, the difference at 3000 Hz is 1dB, and the difference at 4000 Hz is 3 dB. These values are subtracted from the respective hearing levels of the current audiogram.

Once you have done the age correction, compare the age-corrected audiogram to the baseline to determine the severity of the shift. There is no need to age-correct the baseline for this purpose because the calculation above already took that into consideration.

	Frequency (Hz)		
	2000	3000	4000
Age-corrected Current Audiogram	9	9	22
Baseline Audiogram	0	0	5
Shift	9	9	17

An STS is present when the difference between the current audiogram and the baseline audiogram is 10 dB averaged from the 2000 Hz, 3000 Hz and 4000 Hz readings. In this instance, the average of 9 dB (from the 2000 Hz reading), 9 dB (from the 3000 Hz reading), and 17 dB (from the 4000 Hz reading) is 11.7 dB. This is an STS because the shift is more than 10 dB, even after the age correction.

# AGE RELATED HEARING LOSS

**TABLE F-1 - AGE CORRECTION VALUES IN DECIBELS FOR MALES**

Years	Audiometric Test Frequency (Hz)			Years	Audiometric Test Frequency (Hz)		
	2000	3000	4000		2000	3000	4000
20 or younger	3	4	5	41	6	10	14
21	3	4	5	42	7	11	16
22	3	4	5	43	7	12	16
23	3	4	6	44	7	12	17
24	3	5	6	45	7	13	18
25	3	5	7	46	8	13	19
26	4	5	7	47	8	14	19
27	4	6	7	48	8	14	20
28	4	6	8	49	9	15	21
29	4	6	8	50	9	16	22
30	4	6	9	51	9	16	23
31	4	7	9	52	10	17	24
32	5	7	10	53	10	18	25
33	5	7	10	54	10	18	26
34	5	8	11	55	11	19	27
35	5	8	11	56	11	20	28
36	5	9	12	57	11	21	29
37	6	9	12	58	12	22	31
38	6	9	13	59	12	22	32
39	6	10	14	60 or older	13	23	33
40	6	10	14				

**TABLE F-2 - AGE CORRECTION VALUES IN DECIBELS FOR FEMALES**

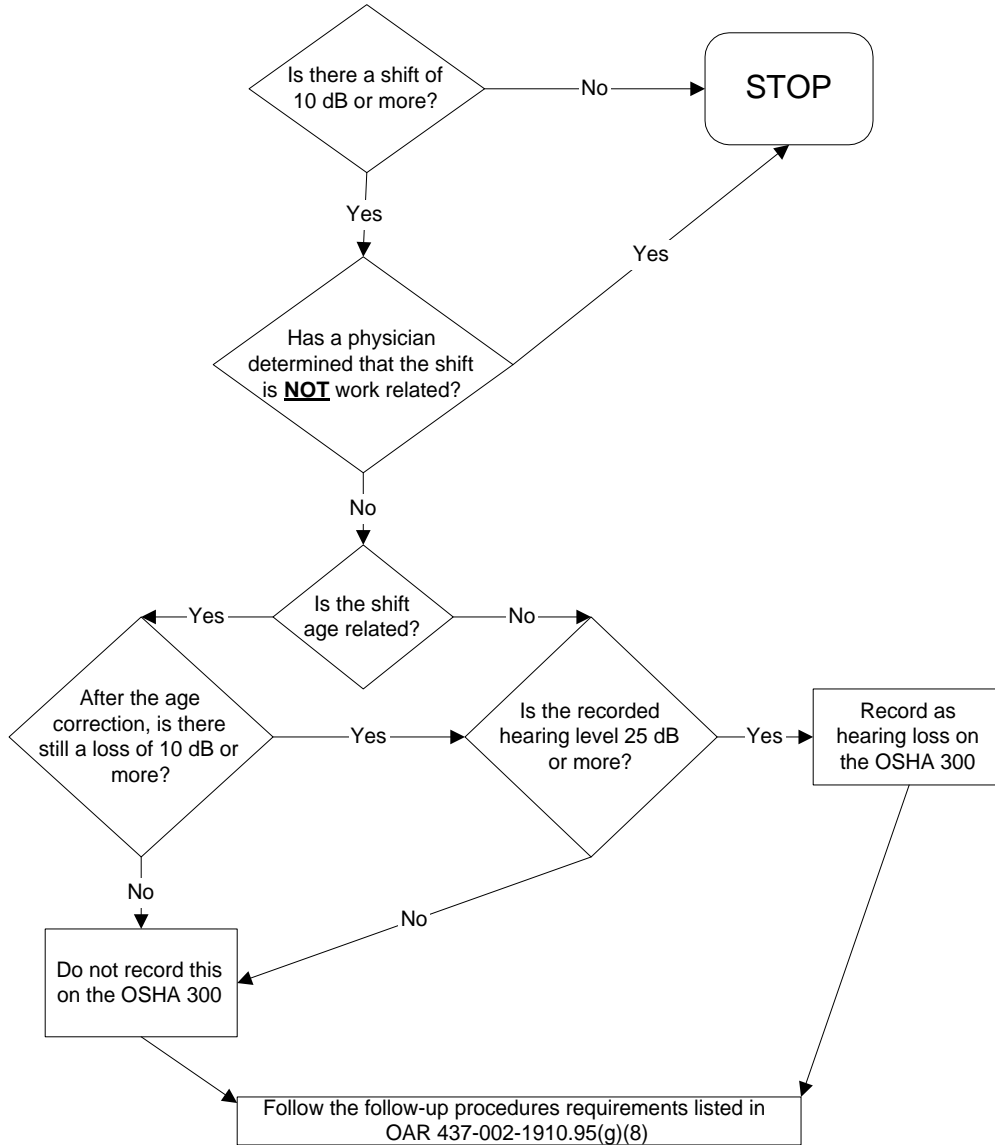
Years	Audiometric Test Frequency (Hz)			Years	Audiometric Test Frequency (Hz)		
	2000	3000	4000		2000	3000	4000
20 or younger	4	3	3	41	8	8	8
21	4	4	3	42	8	9	9
22	4	4	4	43	8	9	9
23	5	4	4	44	8	9	9
24	5	4	4	45	8	10	10
25	5	4	4	46	9	10	10
26	5	5	4	47	9	10	11
27	5	5	5	48	9	11	11
28	5	5	5	49	9	11	11
29	5	5	5	50	10	11	12
30	6	5	5	51	10	12	12
31	6	6	5	52	10	12	13
32	6	6	6	53	10	13	13
33	6	6	6	54	11	13	14
34	6	6	6	55	11	14	14
35	6	7	7	56	11	14	15
36	7	7	7	57	11	15	15
37	7	7	7	58	12	15	16
38	7	7	7	59	12	16	16
39	7	8	8	60 or older	12	16	17
40	7	8	8				

Stat. Auth.: ORS 654.025(2) and 656.726(4).  
 Stats. Implemented: ORS 654.001 through 654.295.  
 Hist: OR-OSHA Admin. Order 7-2002, f. 11/15/02, ef. 11/15/02.



# HEARING LOSS RECORDABILITY FLOWCHART

## Appendix B (Nonmandatory) to 437-001-0700, Hearing Loss Recordability Flowchart



All numbers referenced below are taken as an average of the 2K, 3K, and 4K Hx. levels of the audiogram.

\* 1910.95 assumes that any shift is workplace-induced unless a physician determines otherwise.

**Stat. Auth.:** ORS 654.025(2) and 656.726(4).

**Stats. Implemented:** ORS 654.001 through 654.295.

**Hist:** OR-OSHA Admin. Order 7-2002, f. 11/15/02, ef. 11/15/02.

